



## Freestanding Notice Board - Recycled Plastic

Our **recycled plastic notice boards** offer a durable, eco-friendly solution for public spaces. Combining the strength and weather resistance needed for outdoor use with a design that suits both traditional and modern settings, they're ideal for parks, schools, and community areas.

Available in single or double door options, each board features secure, lockable doors and is easy to maintain. Made from recycled materials, they provide long-lasting performance while supporting sustainability and responsible resource use.

### Product features

- \* Wood effect recycled plastic and stainless steel construction
- \* 100% recyclable
- \* No maintenance required
- \* Can be supplied with or without a header board
- \* Robust locks
- \* Gas struts to support doors when open
- \* Tough 4mm clear polycarbonate window
- \* Magnetic back board - magnets included
- \* Vent holes to minimise condensation
- \* Standard sizes A2, A1 and A0
- \* 1 year manufacturer's warranty

**Fitzpatrick Woolmer Design & Publishing Limited**

Unit 7 Lakeside Park, Neptune Close, Rochester, Kent, ME2 4LT  
t: 01634 711 771 e: [info@fwdp.co.uk](mailto:info@fwdp.co.uk) w: [fwdp.co.uk](http://fwdp.co.uk)



By Appointment to His Majesty The King  
Manufacturer of Signs and Wayfinding  
Fitzpatrick Woolmer Design & Publishing Ltd, Kent



Specification applies to the standard product. Our range of options usually allow us to accommodate any differences you may require. Please contact us and we will be happy to support you in developing this specification to meet your requirements.

Option delete/ update as appropriate

**Manufacturer:** Fitzpatrick Woolmer,  
Unit 7 Lakeside Park, Neptune Close,  
Rochester, Kent, ME2 4LT.

**Tel:** 01634 711 771

**Email:** info@fwdp.co.uk

**Material:** Polystyrene foam

**Origin:** UK

**Certification:** 100% recycled plastic waste

**Finish:** Cedar effect

**Metal:** Stainless steel

**Grade:** 304

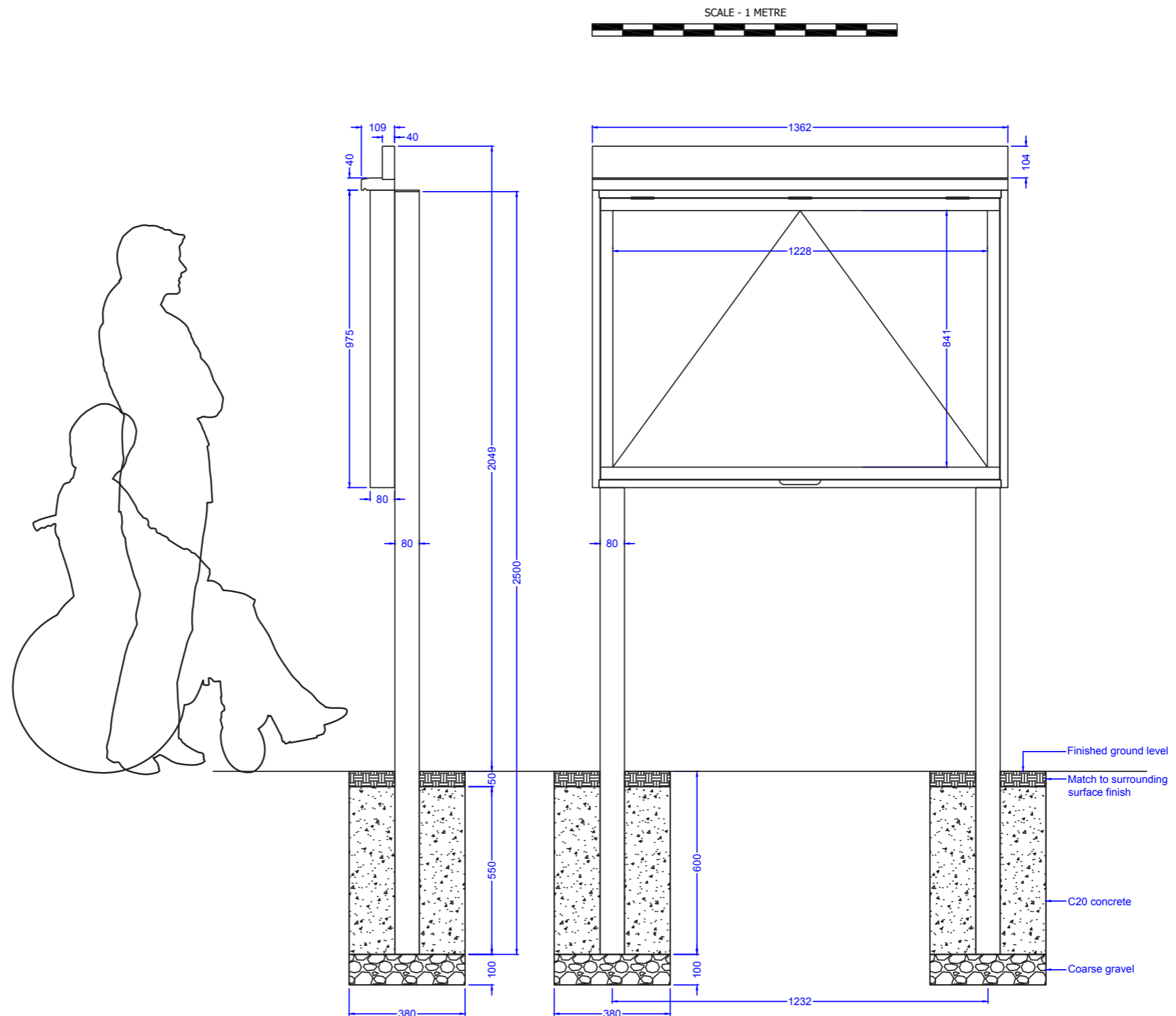
**Finish:** Powdercoat to BS EN 12206:2021 Part 1

**Colour:** RAL 9005 Black

**Weight:** 73kg

**Installation:** Posts extend 600mm below ground level

**Guarantee:** One year manufacturer's warranty



Note: All dimensions are indicative only. Footing details are subject to soil conditions and structural engineers recommendations.

Specification applies to the standard product. Our range of options usually allow us to accommodate any differences you may require. Please contact us and we will be happy to support you in developing this specification to meet your requirements.

Option delete/ update as appropriate

**Manufacturer:** Fitzpatrick Woolmer,  
Unit 7 Lakeside Park, Neptune Close,  
Rochester, Kent, ME2 4LT.

**Tel:** 01634 711 771

**Email:** info@fwdp.co.uk

**Material:** Polystyrene foam

**Origin:** UK

**Certification:** 100% recycled plastic waste

**Finish:** Cedar effect

**Metal:** Stainless steel

**Grade:** 304

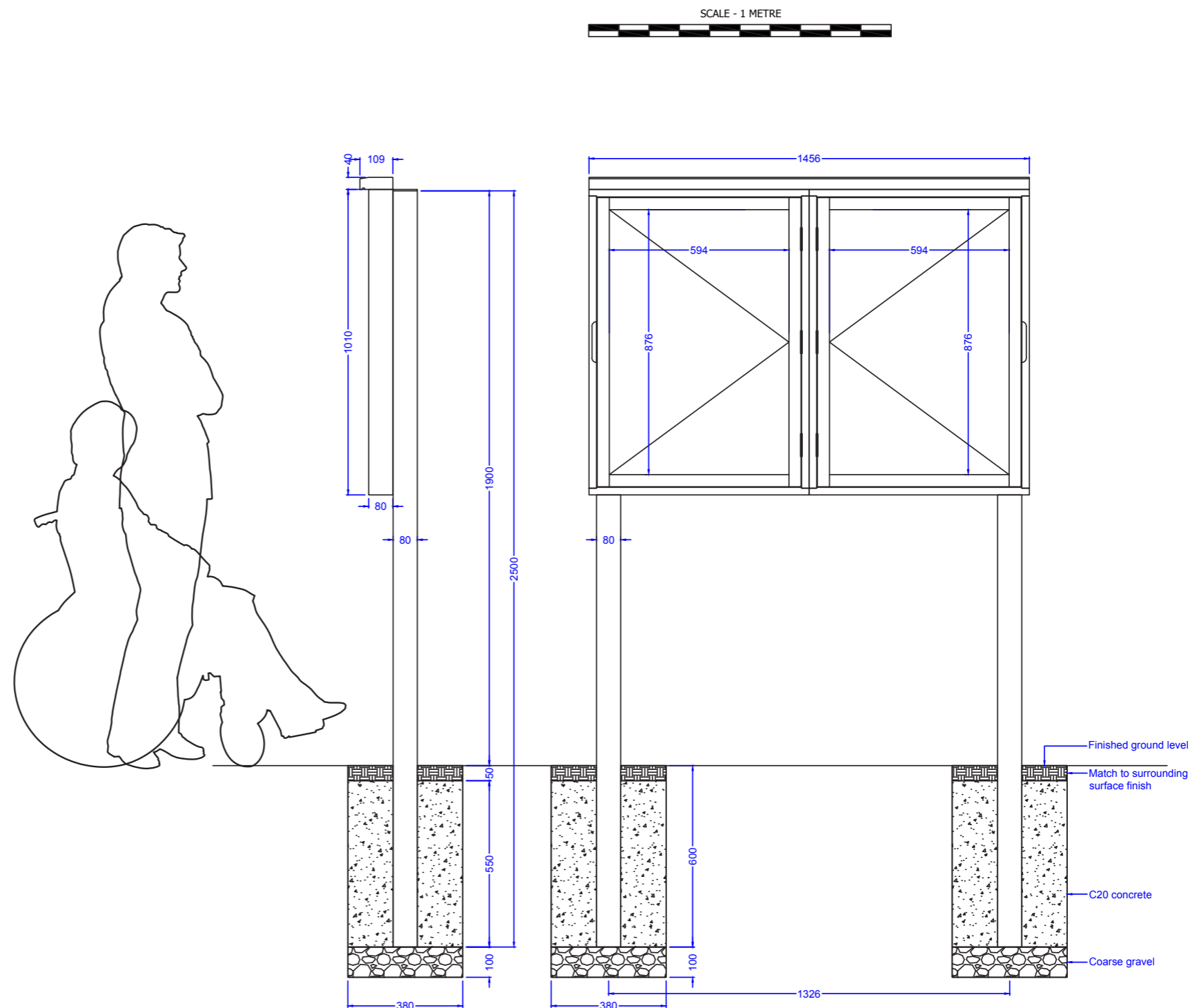
**Finish:** Powdercoat to BS EN 12206:2021 Part 1

**Colour:** RAL 9005 Black

**Weight:** 76kg

**Installation:** Posts extend 600mm below ground level

**Guarantee:** One year manufacturer's warranty



Note: All dimensions are indicative only. Footing details are subject to soil conditions and structural engineers recommendations.

Specification applies to the standard product. Our range of options usually allow us to accommodate any differences you may require. Please contact us and we will be happy to support you in developing this specification to meet your requirements.

Option delete/ update as appropriate

**Manufacturer:** Fitzpatrick Woolmer,  
Unit 7 Lakeside Park, Neptune Close,  
Rochester, Kent, ME2 4LT.

**Tel:** 01634 711 771

**Email:** info@fwdp.co.uk

**Material:** Polystyrene foam

**Origin:** UK

**Certification:** 100% recycled plastic waste

**Finish:** Cedar effect

**Metal:** Stainless steel

**Grade:** 304

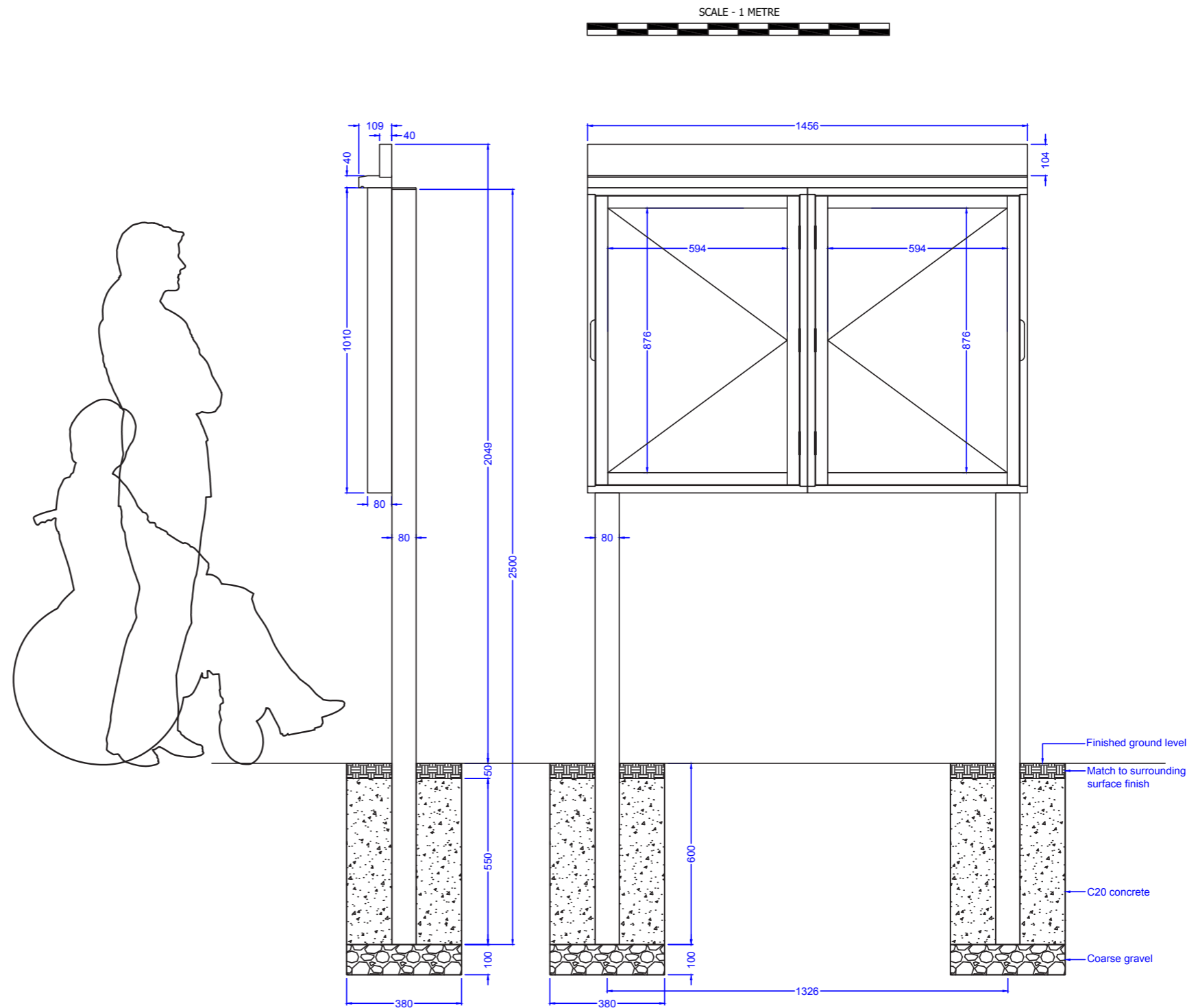
**Finish:** Powdercoat to BS EN 12206:2021 Part 1

**Colour:** RAL 9005 Black

**Weight:** 80kg

**Installation:** Posts extend 600mm below ground level

**Guarantee:** One year manufacturer's warranty



Note: All dimensions are indicative only. Footing details are subject to soil conditions and structural engineers recommendations.

Specification applies to the standard product. Our range of options usually allow us to accommodate any differences you may require. Please contact us and we will be happy to support you in developing this specification to meet your requirements.

Option delete/ update as appropriate

**Manufacturer:** Fitzpatrick Woolmer,  
Unit 7 Lakeside Park, Neptune Close,  
Rochester, Kent, ME2 4LT.

**Tel:** 01634 711 771

**Email:** info@fwdp.co.uk

**Material:** Polystyrene foam

**Origin:** UK

**Certification:** 100% recycled plastic waste

**Finish:** Cedar effect

**Metal:** Stainless steel

**Grade:** 304

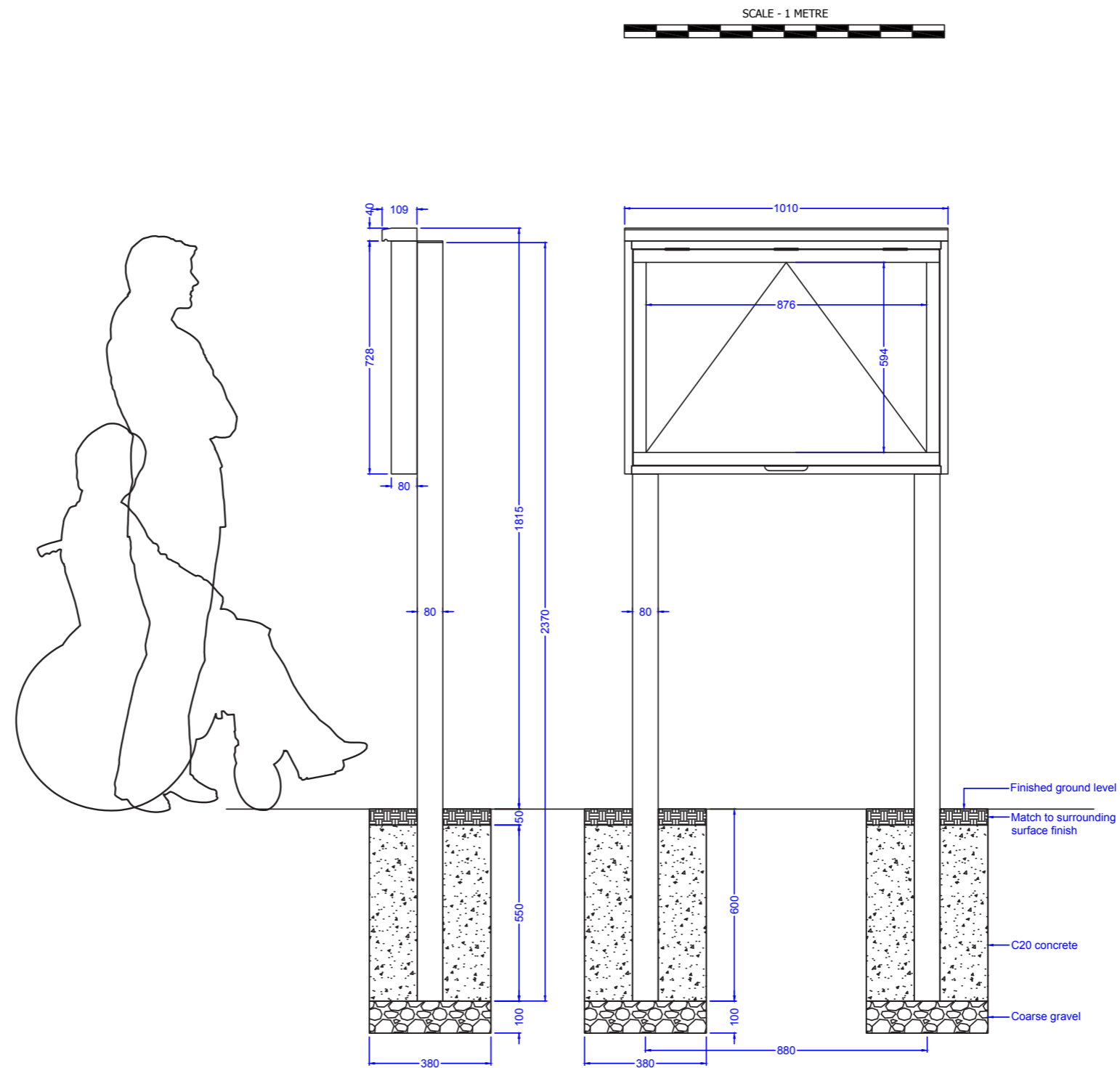
**Finish:** Powdercoat to BS EN 12206:2021 Part 1

**Colour:** RAL 9005 Black

**Weight:** 51kg

**Installation:** Posts extend 600mm below ground level

**Guarantee:** One year manufacturer's warranty



Note: All dimensions are indicative only. Footing details are subject to soil conditions and structural engineers recommendations.

Specification applies to the standard product.  
Our range of options usually allow us to accommodate any differences you may require.  
Please contact us and we will be happy to support you in developing this specification to meet your requirements.

Option delete/ update as appropriate

**Manufacturer:** Fitzpatrick Woolmer,  
Unit 7 Lakeside Park, Neptune Close,  
Rochester, Kent, ME2 4LT.

**Tel:** 01634 711 771

**Email:** info@fwdp.co.uk

**Material:** Polystyrene foam

**Origin:** UK

**Certification:** 100% recycled plastic waste

**Finish:** Cedar effect

**Metal:** Stainless steel

**Grade:** 304

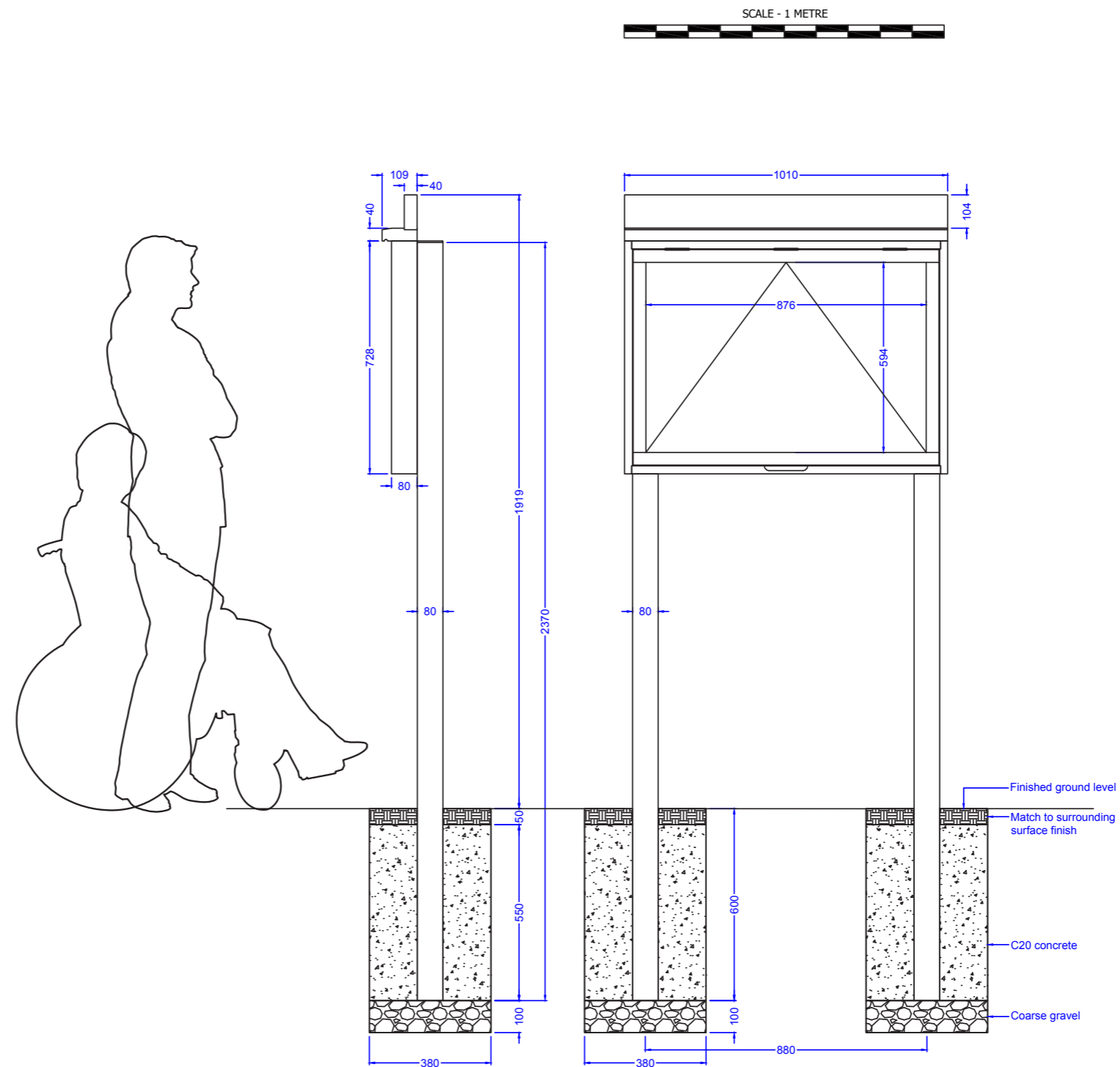
**Finish:** Powdercoat to BS EN 12206:2021 Part 1

**Colour:** RAL 9005 Black

**Weight:** 54kg

**Installation:** Posts extend 600mm below ground level

**Guarantee:** One year manufacturer's warranty



Note: All dimensions are indicative only. Footing details are subject to soil conditions and structural engineers recommendations.

Specification applies to the standard product.  
Our range of options usually allow us to accommodate any differences you may require.  
Please contact us and we will be happy to support you in developing this specification to meet your requirements.

Option delete/ update as appropriate

**Manufacturer:** Fitzpatrick Woolmer,  
Unit 7 Lakeside Park, Neptune Close,  
Rochester, Kent, ME2 4LT.

**Tel:** 01634 711 771

**Email:** info@fwdp.co.uk

**Material:** Polystyrene foam

**Origin:** UK

**Certification:** 100% recycled plastic waste

**Finish:** Cedar effect

**Metal:** Stainless steel

**Grade:** 304

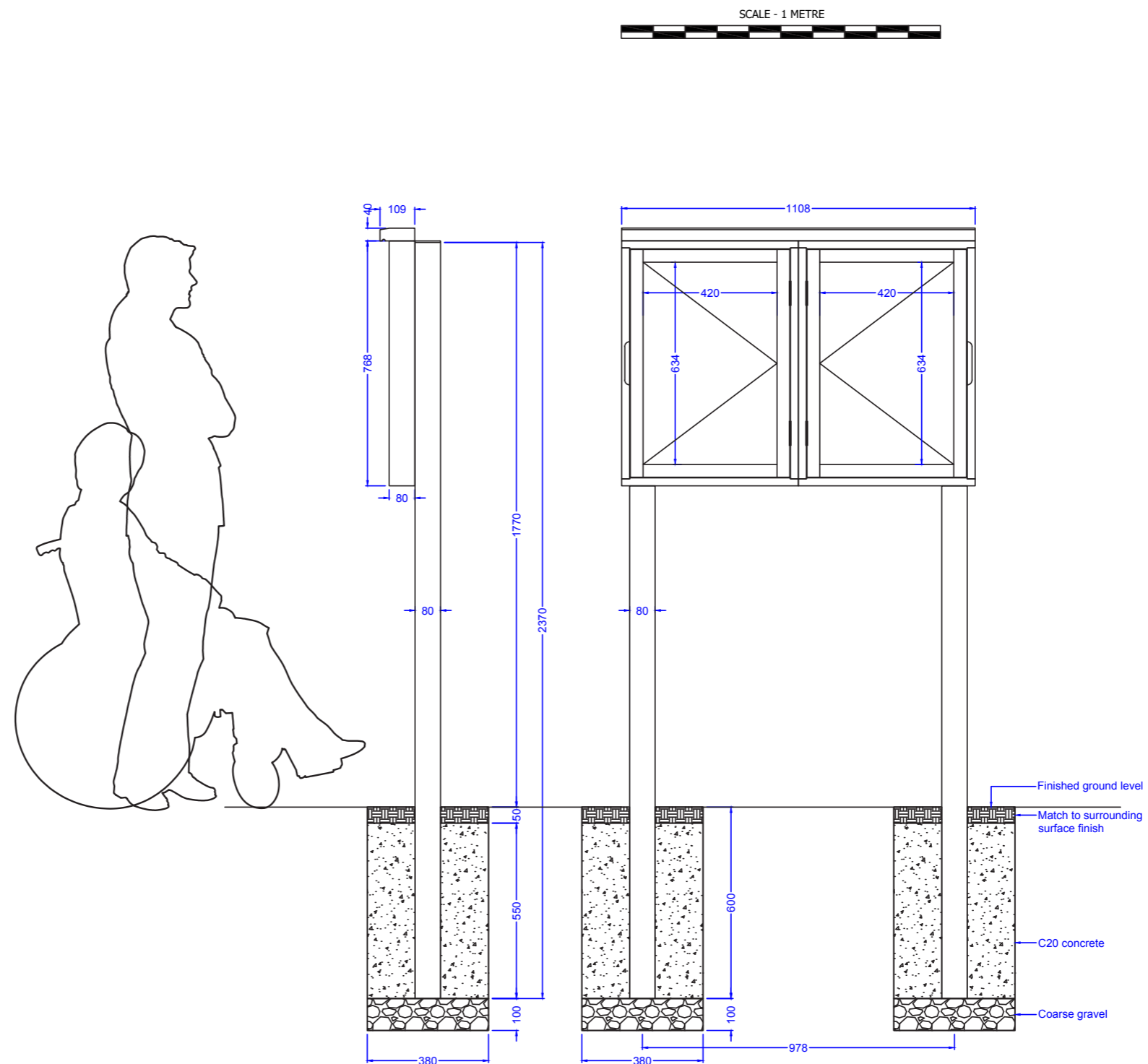
**Finish:** Powdercoat to BS EN 12206:2021 Part 1

**Colour:** RAL 9005 Black

**Weight:** 57kg

**Installation:** Posts extend 600mm below ground level

**Guarantee:** One year manufacturer's warranty



Note: All dimensions are indicative only. Footing details are subject to soil conditions and structural engineers recommendations.

Specification applies to the standard product.  
Our range of options usually allow us to accommodate any differences you may require.  
Please contact us and we will be happy to support you in developing this specification to meet your requirements.

Option delete/ update as appropriate

**Manufacturer:** Fitzpatrick Woolmer,  
Unit 7 Lakeside Park, Neptune Close,  
Rochester, Kent, ME2 4LT.

**Tel:** 01634 711 771

**Email:** info@fwdp.co.uk

**Material:** Polystyrene foam

**Origin:** UK

**Certification:** 100% recycled plastic waste

**Finish:** Cedar effect

**Metal:** Stainless steel

**Grade:** 304

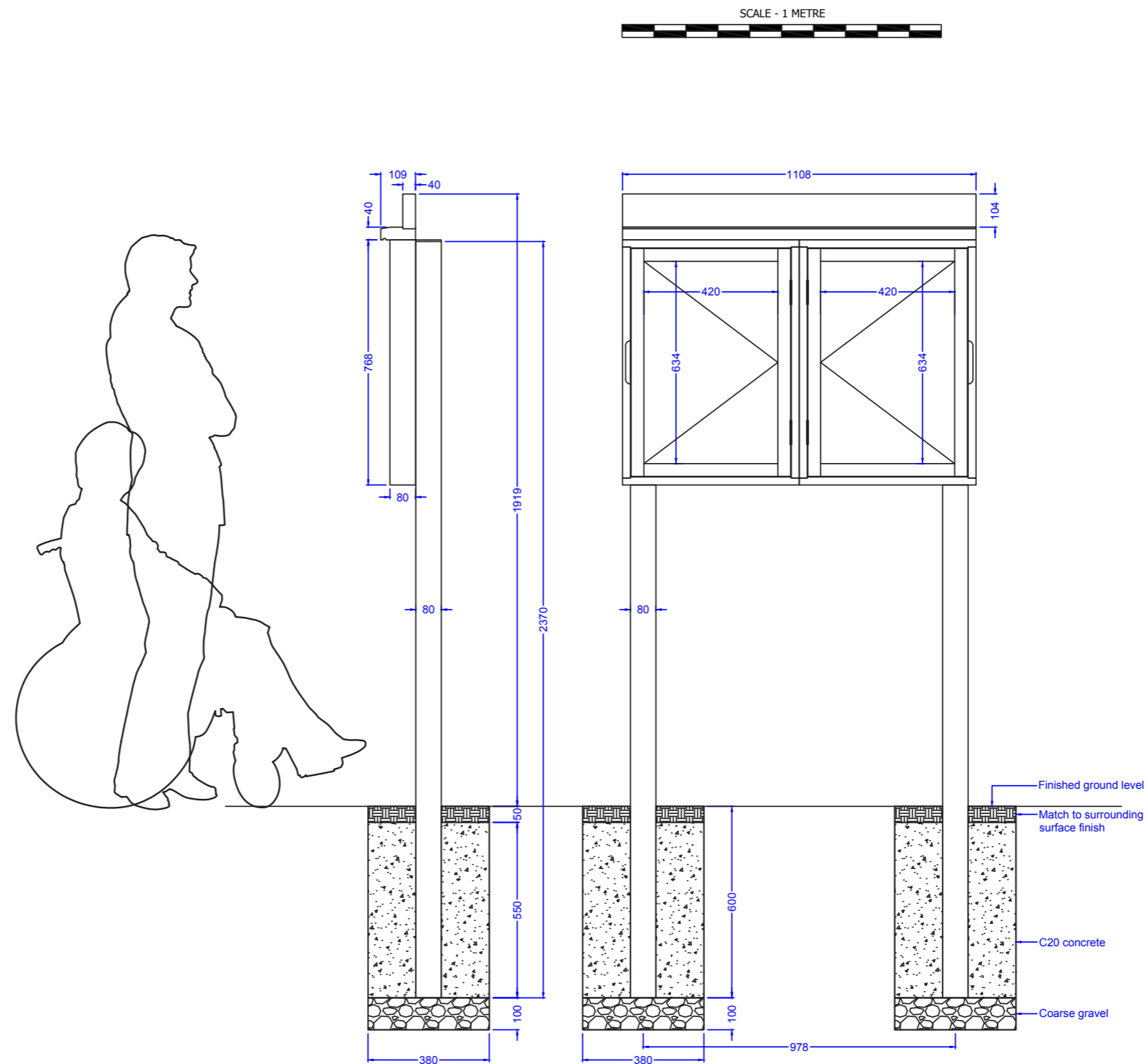
**Finish:** Powdercoat to BS EN 12206:2021 Part 1

**Colour:** RAL 9005 Black

**Weight:** 60kg

**Installation:** Posts extend 600mm below ground level

**Guarantee:** One year manufacturer's warranty



Note: All dimensions are indicative only. Footing details are subject to soil conditions and structural engineers recommendations.

Specification applies to the standard product. Our range of options usually allow us to accommodate any differences you may require. Please contact us and we will be happy to support you in developing this specification to meet your requirements.

Option delete/ update as appropriate

**Manufacturer:** Fitzpatrick Woolmer,  
Unit 7 Lakeside Park, Neptune Close,  
Rochester, Kent, ME2 4LT.

**Tel:** 01634 711 771

**Email:** info@fwdp.co.uk

**Material:** Polystyrene foam

**Origin:** UK

**Certification:** 100% recycled plastic waste

**Finish:** Cedar effect

**Metal:** Stainless steel

**Grade:** 304

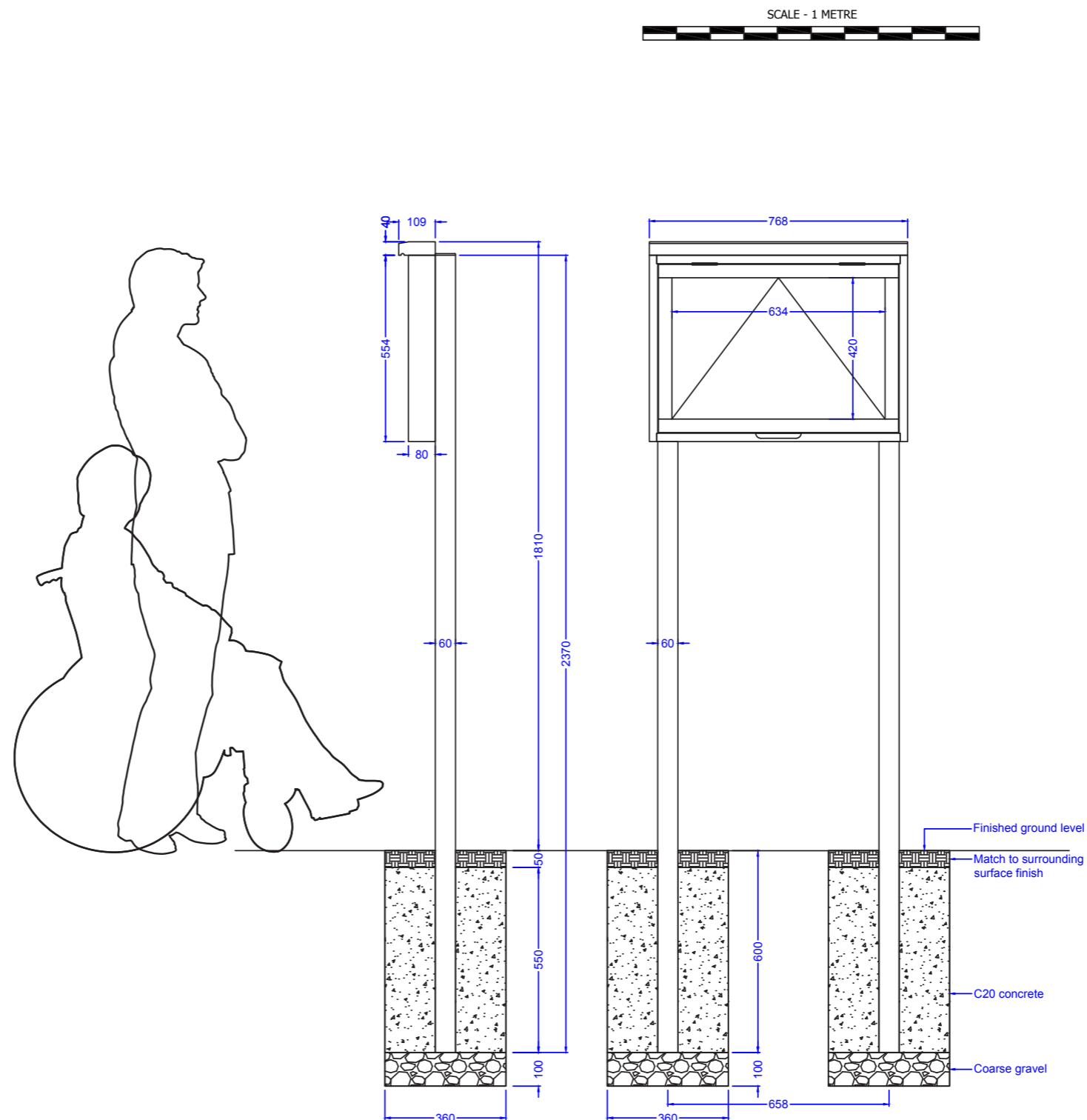
**Finish:** Powdercoat to BS EN 12206:2021 Part 1

**Colour:** RAL 9005 Black

**Weight:** 42kg

**Installation:** Posts extend 600mm below ground level

**Guarantee:** One year manufacturer's warranty



Note: All dimensions are indicative only. Footing details are subject to soil conditions and structural engineers recommendations.

Specification applies to the standard product. Our range of options usually allow us to accommodate any differences you may require. Please contact us and we will be happy to support you in developing this specification to meet your requirements.

Option delete/ update as appropriate

**Manufacturer:** Fitzpatrick Woolmer,  
Unit 7 Lakeside Park, Neptune Close,  
Rochester, Kent, ME2 4LT.

**Tel:** 01634 711 771

**Email:** info@fwdp.co.uk

**Material:** Polystyrene foam

**Origin:** UK

**Certification:** 100% recycled plastic waste

**Finish:** Cedar effect

**Metal:** Stainless steel

**Grade:** 304

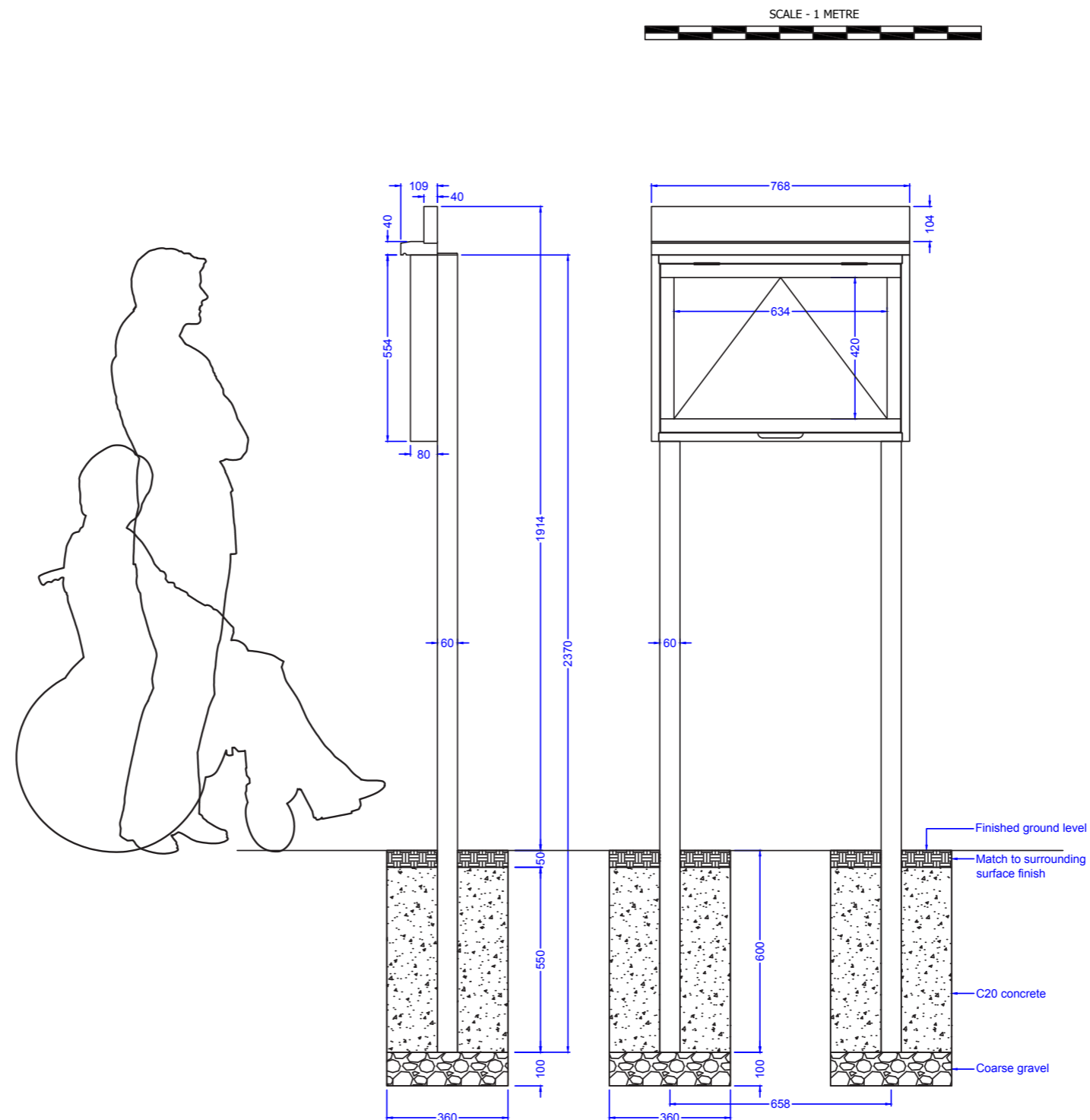
**Finish:** Powdercoat to BS EN 12206:2021 Part 1

**Colour:** RAL 9005 Black

**Weight:** 44kg

**Installation:** Posts extend 600mm below ground level

**Guarantee:** One year manufacturer's warranty



Note: All dimensions are indicative only. Footing details are subject to soil conditions and structural engineers recommendations.